

Table scale RWS-3236

For wet and tough environments

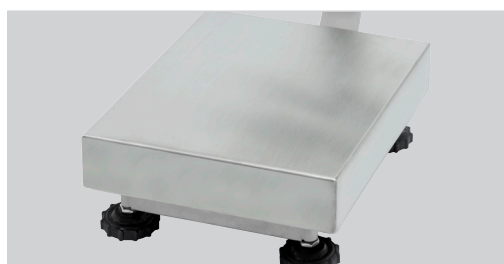
Table scale in stainless steel design, including load cell.
 Communication RS232 as standard. Approved and available in several capacities 6 – 30 Kg. For wet & tough environments.
 Built-in rechargeable battery included.




Benefits

- ✓ Multi-range only on RWS-3236
- ✓ Capacity: 6, 15 & 30kg
- ✓ In stainless steel design and IP-65/67 class
- ✓ Check weighing, summation, animal weighing
- ✓ 22 mm LCD display with backlight
- ✓ Communication with RS-232 as standard
- ✓ Powered by AC/DC adapter and/or rechargeable battery

Technical specifications	RWS-3236-6K-MR	RWS-3236-15K-MR	RWS-3236-30K-MR
Capacity (kg)	6	15	30
Readability (g)	1/2	2/5	5/10
Accuracy (g)	+/-1/2	+/-2/5	+/-5/10
Weighing platform size (mm)	320 x 360	320 x 360	320 x 360
Stainless steel weighing platform	✓	✓	✓
Size, product (WxLxH mm)	320 x 360 x 110	320 x 360 x 110	320 x 360 x 110
Net weight (kg)	10	10	10
Display	22 mm LCD display with backlight		



In stainless steel design with adjustable feet

-  **EXT**
External adjustment
-  **IP-65**
Density class IP-65/67
-  **LCD**
LCD-display
-  **MR**
MR (multi range)
-  **Approved**
Approved
-  **Load cell**
Load cell
-  **Σ**
Summation
-  **III**
Approved OIML Class III
-  **Rechargeable battery**
Rechargeable battery
-  **Animal weighing**
Animal weighing
-  **CE**
CE marked
-  **Adapter**
Adapter
-  **KG/G
ST/LBS**
Unit selection kg, g
-  **RS-232**
RS-232
-  **INOX**
Stainless (steel)
-  **Warranty 1 year**
Warranty 1 year